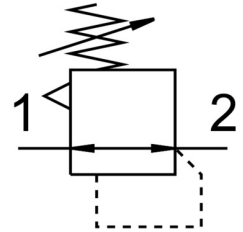


# Pressure regulator LR-1/2-D-O-MIDI

Part number: 162594

FESTO



## Data sheet

Feature	Value
Size	Midi
Type code	LR
Series	D
Actuator lock	Rotary knob with detent
Mounting position	Any
Structural design	Directly controlled diaphragm regulator
Controller function	Outlet pressure constant With primary pressure compensation With secondary exhausting
Symbol	00991540
Pressure gauge	G1/4 prepared
Operating pressure	0 bar ... 16 bar
Pressure regulation range	0.5 bar ... 12 bar
Max. pressure hysteresis	0.2 bar
Standard nominal flow rate	3500 l/min
Operating medium	Compressed air as per ISO 8573-1:2010 [7:4:4] Inert gas
Information on operating and pilot media	Operation with oil lubrication possible (required for further use)
Corrosion resistance class (CRC)	2 - Moderate corrosion stress
Air quality class at the output	Compressed air as per ISO 8573-1:2010 [7:4:4] Inert gas
Temperature of medium	-10 °C ... 60 °C
Ambient temperature	-10 °C ... 60 °C
Product weight	660 g
Type of mounting	Front panel mounting Line installation With accessories
Pneumatic connection 1	G1/2
Pneumatic connection 2	G1/2
Note on materials	Free of copper and PTFE RoHS-compliant
Material of sub-base	Die-cast zinc
Seals material	NBR
Housing material	Die-cast zinc